



4495 WITH 6" OVAL INSTALLATION MANUAL

Parts List

2	6" oval side bar
4	Universal bracket, #4495
4	Stainless steel bolt plate
16	Flat washer, M6
16	Nylock nut, M6 x 1, CL8.8
8	Flat washer, M8
8	Lock washer, M8
8	Hex head cap screw, M8 x 1.25 - 30mm, CL8.8
8	Clip nut, 8mm

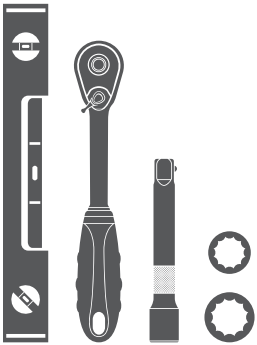
Additional Hardware*

16	T-bolt, M8 x 1.25 - 25mm, CL8.8
16	Flat washer, M8
16	Lock washer, M8
16	Hex nut, M8 x 1, CL8.8

* Aluminum boards are supplied with additional hardware. Quantities listed are in addition to the standard supplied hardware.

Tools Required

Ratchet	Socket, 10mm
Ratchet extension	Socket, 13mm
Level	



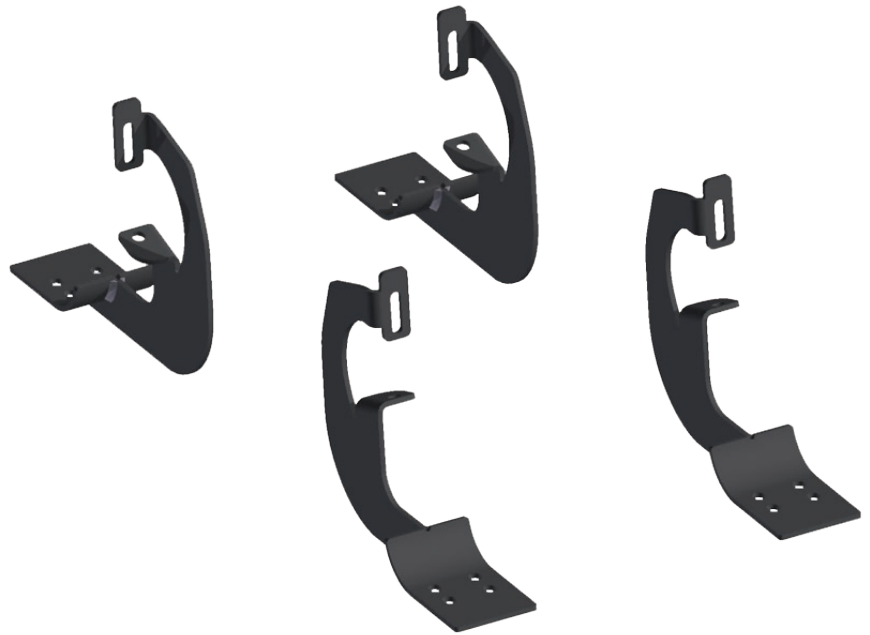
Level of Difficulty

Easy



Scan for helpful install tips

Product Image



Notes and Maintenance

Before you begin installation, read all instructions thoroughly.

Proper tools will improve the quality of installation and reduce the time required.

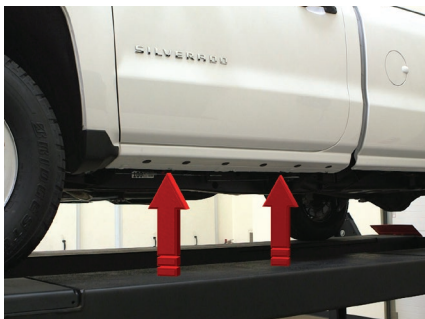
To protect the product, wax after installing. Regular waxing is recommended to add a protective layer over the finish. Do not use any type of polish or wax that may contain abrasives that could damage the finish.

For stainless steel and aluminum, polish may be used to clear small scratches and scuffs on the finish. Mild soap may be used also to clean the product.

Step 1

Locate the three mounting tabs along the bottom edge of the vehicle body.

For this installation use the first and second mount locations.



Step 2

2A - Starting at the front driver side mount location, place a universal bracket over the two factory mount locations.

Attach the bracket to the body panel using two 8mm hex bolts with lock and flat washers.

The bolts should be snug, but do not tighten at this time.



2B - Some models will require the use of an 8mm clip nut for the top and bottom mount location if the vehicle is not supplied with the threaded mount.

Remove the upper plug and slide an 8mm clip nut over the mounting hole on the top and over the tab on the bottom.

Attach the bracket to the body panel using an 8mm hex bolt, lock washer and flat washer.



Step 3

Repeat steps 2A and 2B to install the second bracket over the second mounting tab location from step 1.



Step 4

Carefully place the side bar onto the brackets with the step pad positioned toward the front of the vehicle.



Step 5 - Option 1 (for stainless steel side bars)

Insert the bolt plate into the bottom channel of the side bar, and attach with a 6mm flat washer and nylock nut.

Snug the hardware with a 10mm socket. To allow for adjustments, do not over tighten.

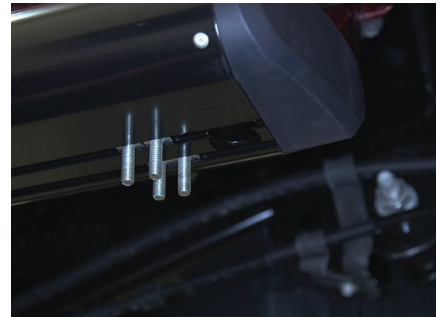


Step 5 - Option 2 (for aluminum side bars)

Insert four T-bolts into the bottom channels of the side bar as shown.

Slide the bolts forward to the front-most bracket and insert them through the cradle.

Repeat this for each bracket and attach with 8mm flat washer, 8mm lock washer and nut. Snug the hardware, but do not fully tighten to allow for adjustments.



Step 6

With all hardware loosely installed ensure the side bar is positioned as desired.

After the side bar is centered, fully tighten all the hardware.

It is recommended to tighten all the bracket to vehicle connections first, followed by the side bar connections.



Step 7

Repeat steps 1 through 6 on the passenger side of the vehicle.

With the side bars installed, periodic inspections should be performed to ensure all mounting hardware remains tight.

To protect your investment, we recommend you apply a layer of nonabrasive wax.

Congratulations on the installation of your brand new Aries 6" oval side bars.

