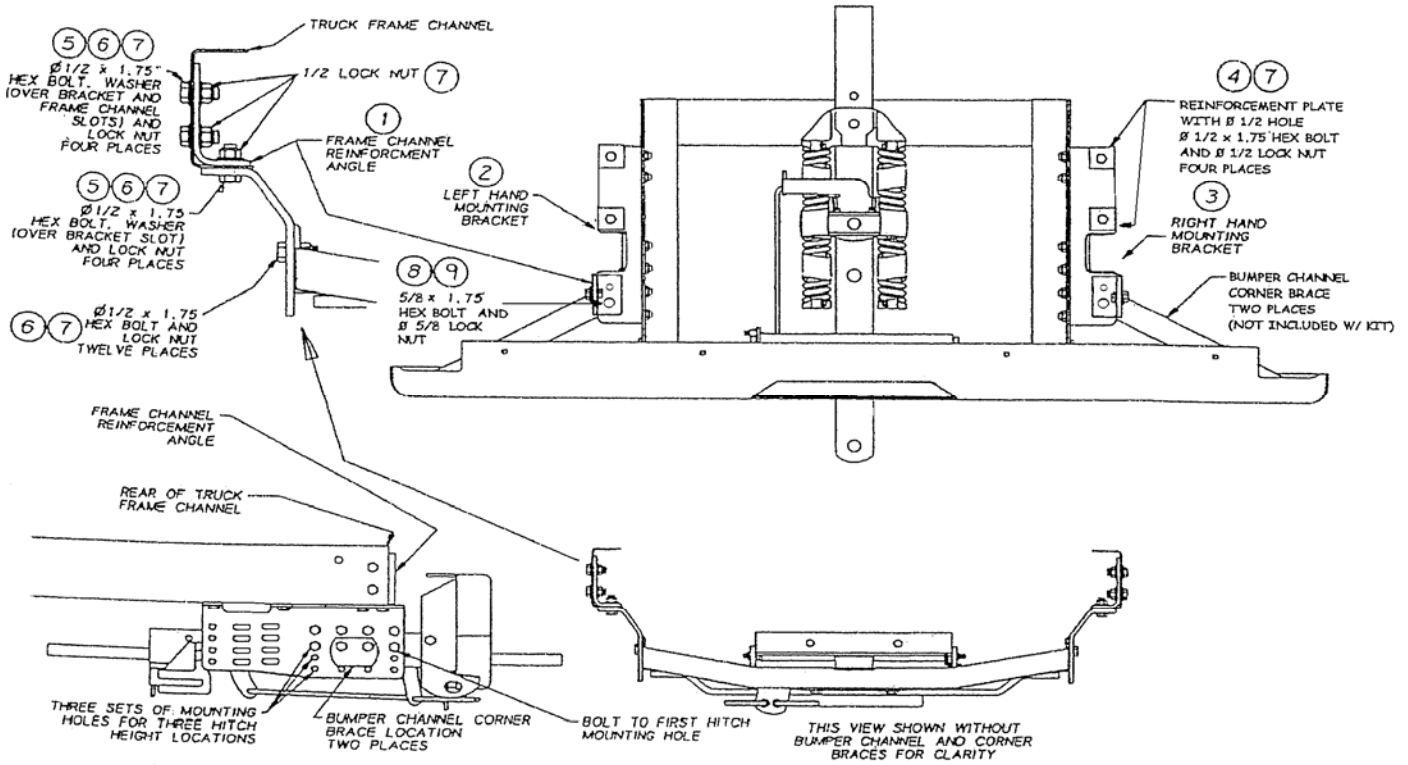


# Quic-Cush'n II MOUNTING INSTRUCTIONS

## 2001-2010 CHEVY 2500/3500 SHORT BED



Ref.	Part Number	Qty.	Description
	<b>47073090</b>		<b>Quic-Cush'n II Chevy 2500 HD SB 01-10</b>
1	47077573	2	Reinforcement Brackets
2	47077583	1	Left Hand Bracket
3	47077584	1	Right Hand Bracket
4	47077507	4	Plate, Reinforce 1/2" Bolt
5	17008001	18	1/2" USS Flat Washer
6	16008075	18	1/2"-13 x 1-3/4" Hex Bolt, Grd. 5
7	14110801	18	1/2" Nyloc Lock Nut
8	16010075	2	5/8"-11 x 1-3/4" Hex Bolt, Grd. 5
9	14111001	2	5/8"-11 Nyloc Lock Nut
	30003400	2	Red Plastic Handle Grips

# ASSEMBLY INSTRUCTIONS

Mounting Kit 47073090

2001-2010 CHEVY 2500/3500 SHORT BED

Follow instructions below and refer to assembly drawings and instruction in the **Quic-Cush'n II** Owner's Manual.

1. Remove existing bumper, bumper brackets, and spare tire.  
**Note:** Do not remove any welded or riveted-in cross members or brackets.
2. Identify Left Hand and Right Hand mounting brackets per diagram on opposite side.
3. Bolt mounting brackets to underside of truck frame with frame channel reinforcement angles and backup plates (Items 1, 4) inside the frame as shown. Use 1/2" X 1-3/4" hex bolts and washers (Items 5, 6) over bracket slot or channel slots. Secure with 1/2" hex nuts (Item 7) to mount. **Do not tighten at this time.**
4. There are three sets of mounting holes in the left and right-hand mounting brackets (Part #2, Part #3) which place the towbar at various heights from the ground. Proper towbar height is 17"-20" from the ground. Measure from the ground to the holes to find which set of holes provides the correct height.  
**Note:** By design the top mounting holes are in line with the towbar. However, on some trucks with heavy duty suspensions or large tires the towbar will be higher than 20", in which case the lowest set of mounting holes are preferable.  
**Note:** If optional valence panel is being installed later, frame assembly must be installed in middle or bottom set of holes.
5. Loosely install **Quic-Cush'n** frame assembly between mounting brackets as shown on opposite side. Install with 1/2" hardware (Items 5, 6, 7) in both brackets and front and rear holes in rear brackets.  
**Do not tighten at this time.**  
**Note:** If you are mounting an earlier version of the **Quic-Cush'n** frame assembly with this mounting kit, an internal mounting hole may not be present and must be drilled into the hitch frame assembly.
6. Loosely install left and right hand diagonal braces to brackets as shown on opposite side with 1/2" bolts. The diagonal brace will always attach to the center two holes on the brackets as shown on opposite side. **Do not tighten at this time.**
7. Install drop center channel to frame assembly with four 1/2" bolts. Bolt diagonal braces on the bumper channel with two 1/2" bolts, washers, and nuts (Item 5, 6, 7) and two 5/8" bolts and nuts (Items 8, 9).  
**Do not tighten at this time.**
8. **Torque all bolts to the following specifications:**  
1/2" Grade 5 bolts.....85 ft-lbs  
5/8" Grade 5 bolts.....170 ft-lbs
9. **IMPORTANT:** When complete, check for proper clearances between truck components and **Quic-Cush'n** bumper assembly. There must be a minimum of 2-1/4" clearance between the forward end of the towbar and truck components with the towbar in the towing or stowed position. A minimum of 1-1/4" must be maintained above the spring loaded towbar locking pin.