



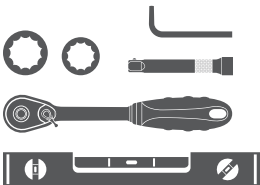
AL231007 INSTALLATION MANUAL

Parts List

1	Driver / left sidebar
1	Passenger / right sidebar
1	Driver / left front mounting bracket
1	Passenger / right front mounting bracket
1	Driver / left middle mounting bracket
1	Passenger / right middle mounting bracket
1	Driver / left rear mounting bracket
1	Passenger / right rear mounting bracket
6	Nut plates, 10mm
12	Hex bolt, 8mm x 25mm
6	Hex bolt, 8mm x 35mm
6	Hex bolt, 10mm x 35mm
18	Lock washer, 8mm
6	Lock washer, 10mm
12	Nylock nut, 6mm
24	Flat washer, 6mm inside dim. x 18mm outside dim.
12	Flat washer, 8mm inside dim. x 24mm outside dim.
6	Flat washer, 10mm inside dim. x 28mm outside dim.
6	Flat washer, 10mm inside dim. x 34mm outside dim.
12	Button head bolt, 6mm x 25mm

Tools Required

Ratchet	Socket, 13mm
Extension	Socket, 10mm
Level	Allen wrench, 4mm



Level of Difficulty

Easy



Scan for helpful install tips

Product Image



Notes and Maintenance

Before you begin installation, read all instructions thoroughly

Proper tools will improve the quality of installation and reduce the time required

To protect the product, wax after installing. Regular waxing is recommended to add a protective layer over the finish. Do not use any type of polish or wax that may contain abrasives that could damage the finish.

For stainless steel and aluminum, polish may be used to clear small scratches and scuffs on the finish. Mild soap may be used also to clean the product.

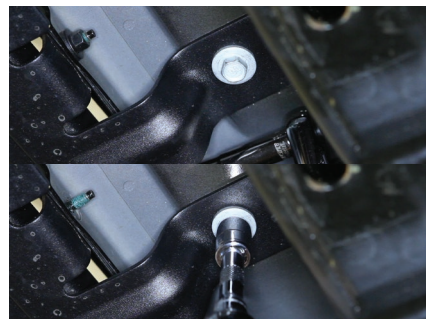
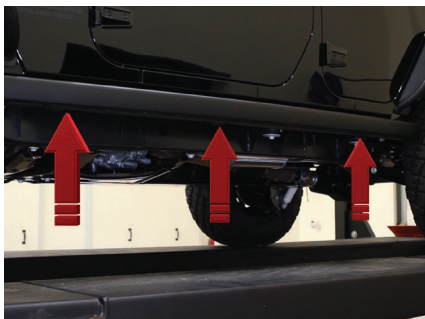
For gloss black finishes, mild soap may be used to clean the product.

Step 1

Starting on the driver side, locate the three attachment points of the stock rock rails.

Using a 10mm socket, remove the two hex head flange nuts holding the rail to the body. Next, remove the factory bolt holding the rail to the frame with a 13mm socket.

Do this for all three locations.



Step 2

Once the flange nuts and bolts have been removed, carefully remove the stock rock rail.

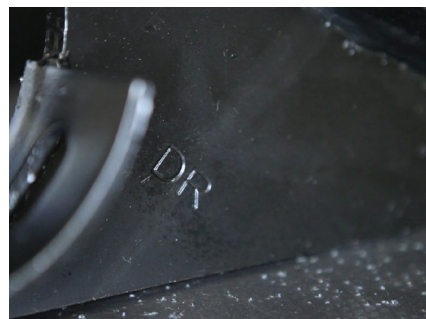
CAUTION: The stock rails can be heavy.



Step 3

Sort out and separate the driver and passenger side mounting brackets. They look similar, but are specific to the mounting location.

To make identifying the brackets more clear, each bracket has been stamped with the attachment location.



Step 4

Starting on the driver side front, locate the bracket mounting location on the underside of the Jeep body. In this example, the Jeep has factory threads.

On older models, the mounting location is not threaded and requires the use of a 10mm nut plate inserted through the square opening.



Step 5

Hold the bracket in place and secure with a 8 x 35mm hex bolt, lock washer and 8 x 28mm large flat washer.

Do not tighten at this time.



Step 6

Line up the mounting plate on the bracket with the factory holes. Insert a 6 x 25mm button head Allen bolt with a 6 x 18mm small flat washer.

Secure with the 6 x 22mm large flat washer and lock nut on the back. Do not completely tighten at this time.

Repeat for the second mounting location on the bracket and for the center and rear brackets.



Step 7

Carefully place the sidebar onto the mounting brackets.

Attach the sidebar to the brackets with the 8mm hex bolts, lock, and flat washers.

The hardware should be installed loosely at this time to allow for adjustments.



Step 8

Check to make sure your sidebars are level. Adjust if necessary and tighten all hardware. Repeat this process on the passenger side.

Remember to do periodic inspections to make sure that all hardware is secure and tight.

Congratulations on the installation of your brand new ARIES 4" round big steps.

