

# INSTALLATION MANUAL

# 13523

## Level of Difficulty

Moderate

Installation difficulty levels are based on time and effort involved and may vary depending on the installer level of expertise, condition of the vehicle and proper tools and equipment.

## Weight Carrying Capacity

Gross trailer weight (GTW)	3,500 lbs.
Tongue weight (TW)	525 lbs.

## Parts List

Item	Qty	Description
1	1	Trailer hitch
2	6	Hex bolt, M12
3	6	Conical-toothed washer, 1/2"

## Tools Required

Socket, 10mm	Exhaust removal pliers
Socket, 19mm	Tape measure
Socket extension, 6"	Tape
Ratchet	Plastic trim tools
Torque wrench	Panel trim removal tool
Hex bits, 5mm or 3/16"	Reciprocating saw / Rotary tool
Flathead screwdriver	Safety glasses
Phillips screwdriver	--

\* For a tools reference guide visit [curtmfg.com/trailer-hitch-installation](http://curtmfg.com/trailer-hitch-installation)

## ⚠ WARNING

Never exceed the vehicle manufacturer's recommended towing capacity.

## Product Photo



## ⚠ CAUTION

Use caution when trimming underbody panels.

## NOTICE

Visit [www.curtmfg.com](http://www.curtmfg.com) for a full-color copy of this instruction manual, as well as helpful videos, guides and much more!

Before you begin installation, read all instructions thoroughly.

Proper tools will improve the quality of installation and reduce the time required.

This installation requires:

- Part removal and trimming of the underbody panel

Periodic inspection of the trailer hitch should be performed to ensure all mounting hardware remains tight and structural components are secure.

To help prevent damage to the product or vehicle, refer to the specified torque specifications when securing hardware during the installation process.

## SAFETY INSTRUCTIONS

Safety glasses should be worn at all times while installing this product.

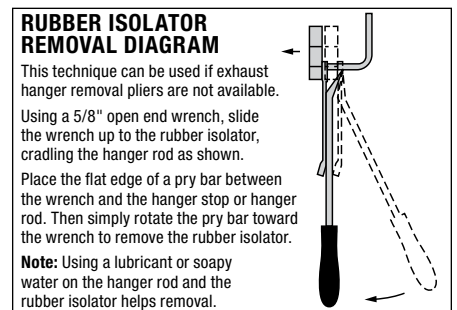
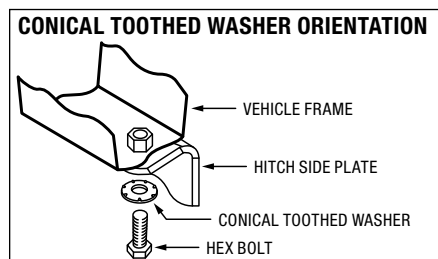
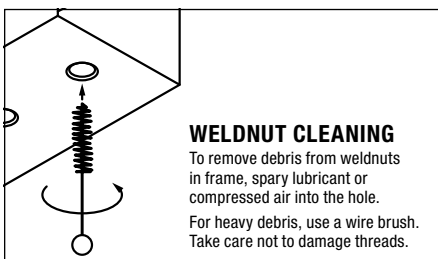
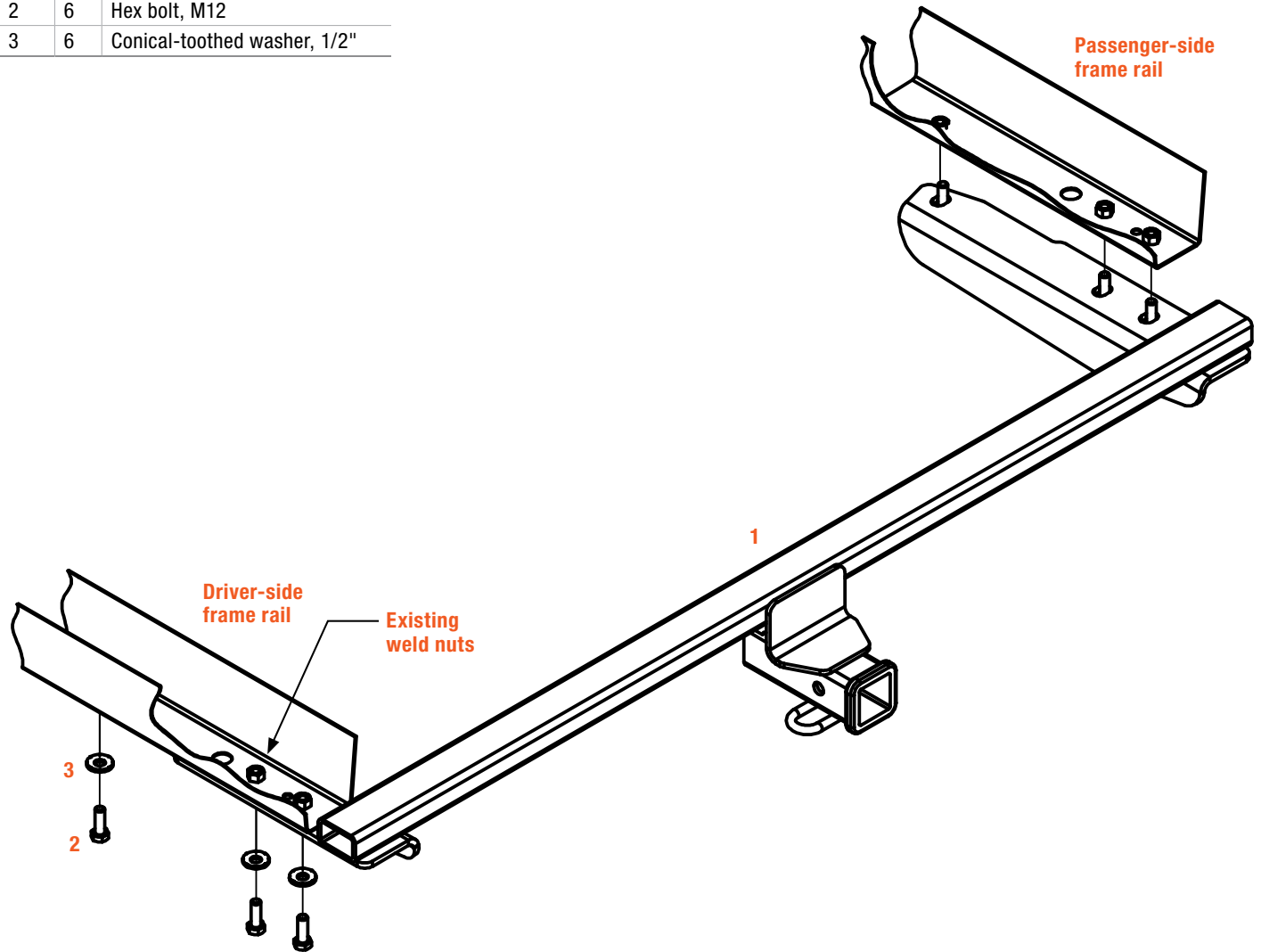
## Product Registration and Warranty

CURT stands behind our products with industry-leading warranties. To get copies of the product warranties, register your purchase or provide feedback, visit: [warranty.curtgroup.com/surveys](http://warranty.curtgroup.com/surveys)

# ASSEMBLY

## Parts List

Item	Qty	Description
1	1	Trailer hitch
2	6	Hex bolt, M12
3	6	Conical-toothed washer, 1/2"



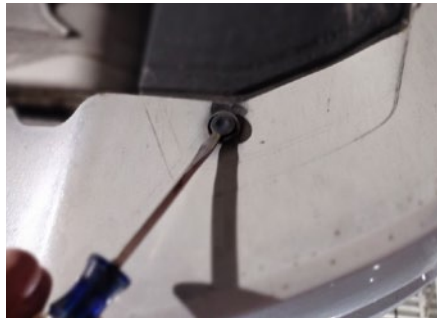
### Step 1

Remove the bottom appearance panel and mud flaps. Use a Phillips screwdriver, panel removal tool and a 10mm socket to remove the rivets and screws from the bottom panel on the driver side. Remove the mud flaps from each side of the vehicle, if present. Set the hardware aside for reinstallation.



### Step 2

Begin removing the bumper fascia using a panel removal tool. Remove the two plastic rivets located in the bottom center of the bumper fascia. If the vehicle has a hands-free lift gate, there will be six total plastic rivets to remove.



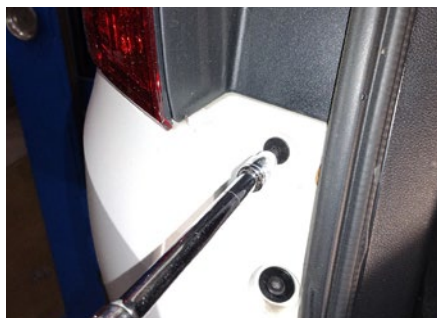
### Step 3

Using a Phillips screwdriver, remove the three screws from each rear wheel well liner.



### Step 4

Open the trunk and use a 3/16" or 5mm hex bit to remove the two screws on each side, if present.



### Step 5

Using plastic trim tools, carefully remove the plastic fascia working from the outside in.

### Step 6

Disconnect each side of the wiring harness from the fascia, if present.

### Step 7

Lower the exhaust by removing the rubber hangers that secure the exhaust.

#### NOTICE

Be sure to support the exhaust before removing it from the rubber hangers.

### Step 8

Carefully raise the hitch into position and slide it over the exhaust pipe on the passenger side. Loosely install an M12 hex bolt (#2) and conical-toothed washer (#3).

#### NOTICE

Be sure to install the washers in the proper orientation.



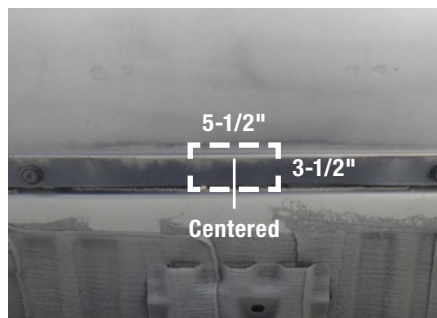
### Step 9

Using a torque wrench, torque all of the M12 fasteners to 76 ft-lbs.



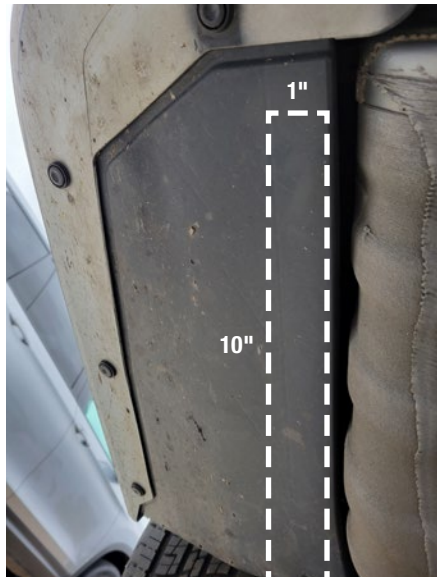
### Step 10

Locate the center of the bumper fascia and trim using the trim diagram to the right as a reference.



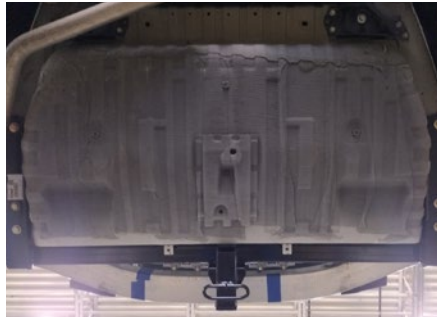
### Step 11

Trim the bottom appearance panel using the trim diagram to the right as a reference.



### Step 12

Reinstall the fasteners, fascia, panels, flaps, wiring and exhaust that were removed in steps 1 through 9



### Final Installed Image



### TOWING BASICS & SAFETY INFORMATION

For information on safely towing your trailer, visit [curtmfg.com/understanding-towing](https://www.curtmfg.com/understanding-towing).