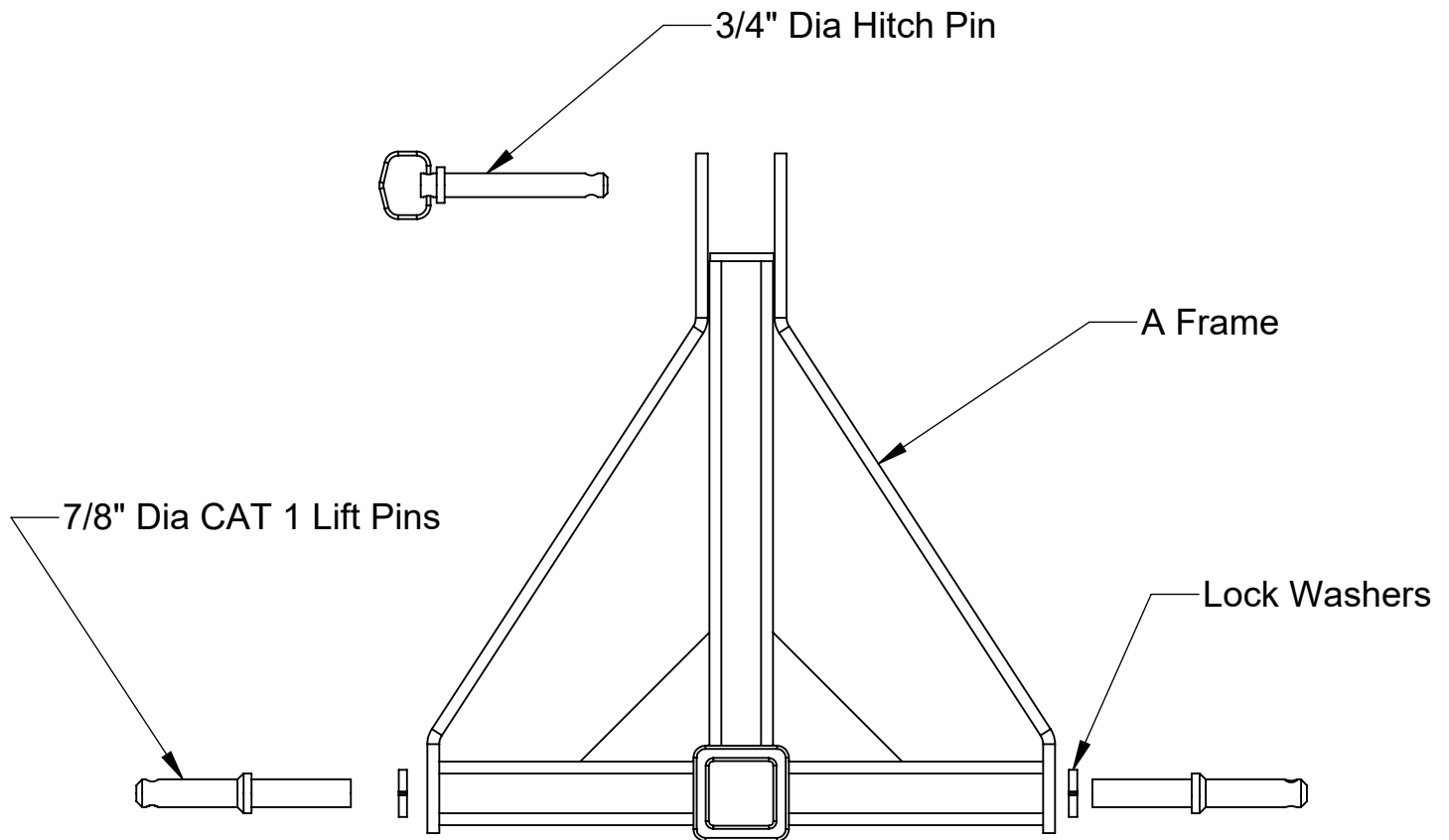


3-Point Hitch Receiver Hitch
RHA-001
Compact tractors

Tools Required: Phillips Screw Driver
Drills: None
Wrenches: None

RATING: CAT 1 lift pins are rated for 3,000# each. Load should not exceed 6,000#. Consult your owner's manual for capacity of your equipment. Do not exceed manufacturers recommendations. Not intended for road use.



1. Thread lift pins and lock washers into weld nuts in sides of A frame. Tighten with Phillips screw driver inserted in lynch pin hole.
2. Raise hitch into position and insert the lift pins into the sway arms of the tractor. Secure with the 1/4" lynch pins provided.
NOTE: Sway arms may need to be adjusted in or out.
3. Adjust lift arm so that it aligns with the top attachment hole and insert 3/4" pin. Secure with spring clip provided.

Thank you for purchasing a Rigid Hitch product

Included:

- | | |
|-------------------------|-------------------------|
| (1) A Frame | (2) 1/4" Lynch Pins |
| (2) 7/8" Dia. Lift Pins | (1) 3/4" Dia. Hitch Pin |
| (2) 7/8" Lock Washers | (1) Spring Clip |

KEEP THIS INSTRUCTION SHEET



THIS PRODUCT COMPLIES WITH SAFETY SPECIFICATIONS AND REQUIREMENTS FOR SAE AND VESC REGULATION V-5 FOR CONNECTING DEVICES AND TOWING SYSTEMS. **DO NOT MODIFY THIS PRODUCT. INSTALL ONLY ON SPECIFIED VEHICLES IN GOOD CONDITION.**

RIGID HITCH
3301 WEST BURNSVILLE PARKWAY
BURNSVILLE, MN 55337

REV.
6/22